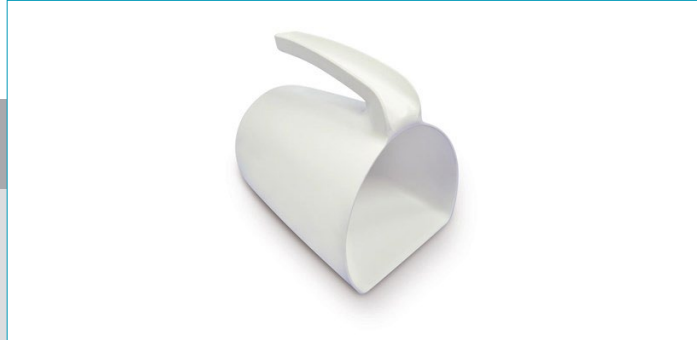




Jug 2 l - White

Graduated jug, ideal for collecting solid and liquid foods, ergonomic hand-grip.



Code	Colour	Size (mm)	Material	Net weight (kg)
1108W	White	140 x 180 x 165	PP	0,180

Usage information

Minimum and maximum temperature	min -20 / max 80 C°
Washing (dishwasher)	-
Autoclave	-
User and maintenance manual	<ul style="list-style-type: none"> - Remove packaging and any label from tools and disinfect them. - Both manual and autoclave disinfection is possible. - Sanitize tools using appropriate chemical decontamination products, in the concentrations, times and temperatures provided. - Make sure tools completely dry up before next use. - Hang tools while drying up to avoid any contamination or breakage. - The storing area must be clean and far away from sources of intense light or heat. - Do not use damaged tools.

Compliance

- REACH
- FDA
- EU 1935/2004 and updates
- EU 2023/2006 and updates
- EU 10/2011 and updates

Logistical information

Internal packaging type	Poly bag	Product barcode	8008805108404
External packaging type	Carton	Box barcode	08008805108404
Quantity per pack (pcs)	6	Customs tariff	39269099
Box gross weight (kg)	1,20	Country of origin	United Kingdom
Box dimensions (mm)	650 x 220 x 195	Palletising (pcs)	288
Box volume (m ³)	0,028	Pallet dimensions (cm)	133 x 90 x 131,5

Available versions

Size		Material	Detectable
Colour			